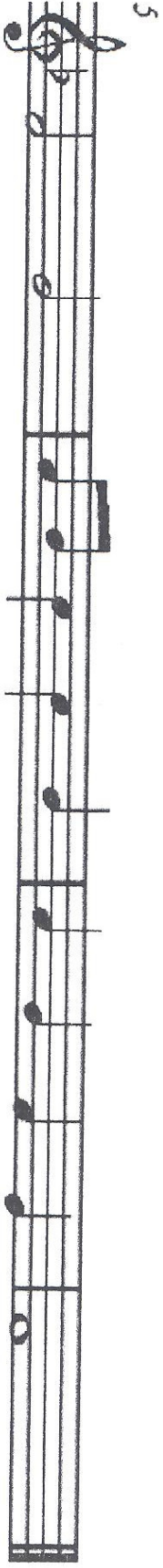
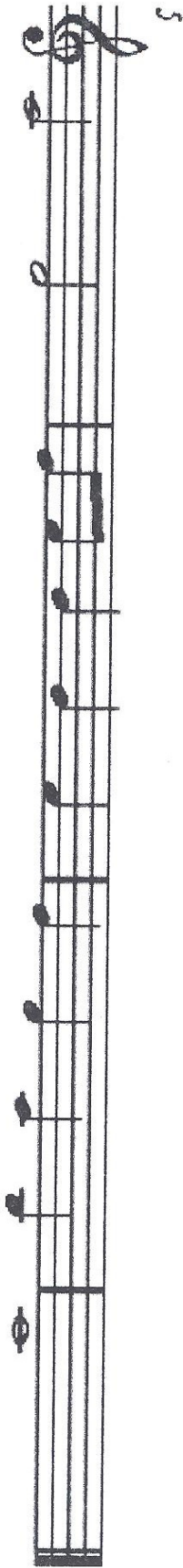
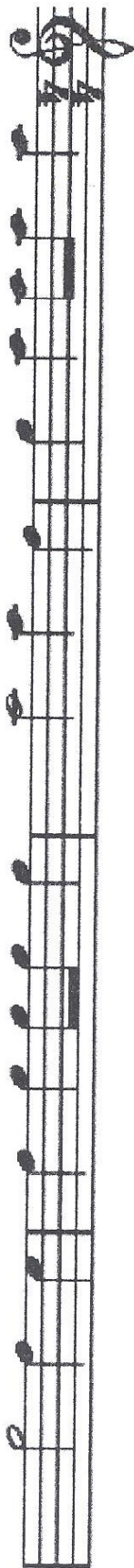
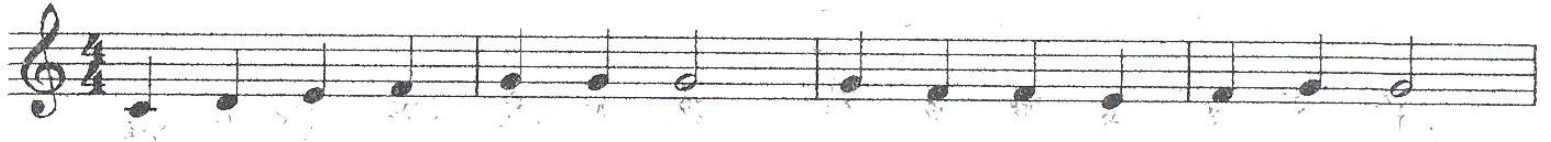


2008 NC Middle School Honors Chorus  
Sight-Singing



# 2004 Middle School Honors Sightsinging



# 2006 Middle School Honors Chorus Sightsinging



# 2011 NC Honors Chorus Sight-Reading

Voice



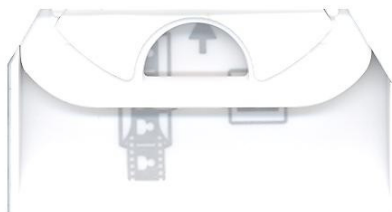
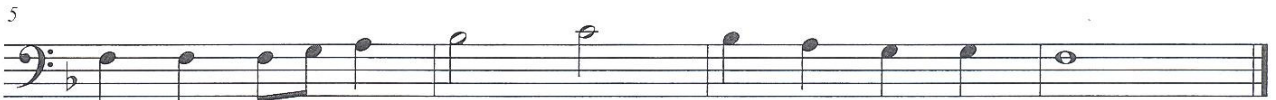
5



Baritone

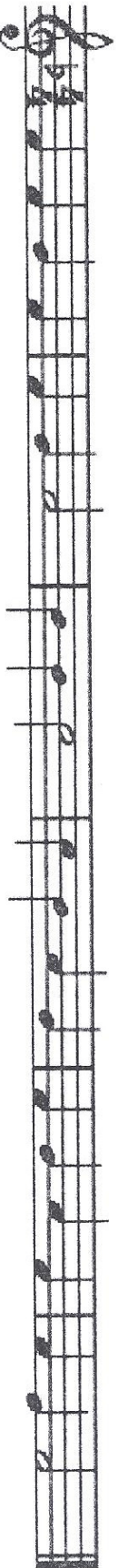


5



# 2007 NC Middle School Honors Chorus Sight-Singing

Soprano



Musical notation for the Soprano part, consisting of a single staff with a treble clef and a key signature of one flat (B-flat). The melody is written in 4/4 time and consists of a series of quarter and eighth notes.

Alto

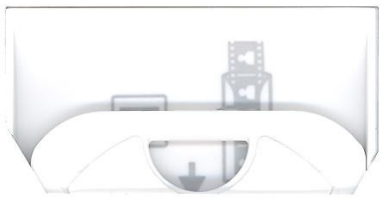
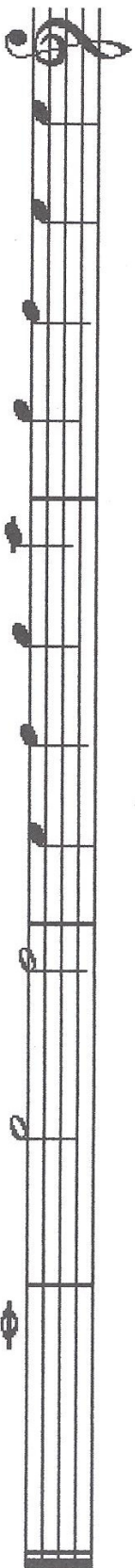


Musical notation for the Alto part, consisting of a single staff with a treble clef and a key signature of one flat (B-flat). The melody is written in 4/4 time and consists of a series of quarter and eighth notes.

**2009 North Carolina Middle School Honors Chorus  
Audition Sight-Singing**



5





2010 North Carolina Middle School Honors Chorus Audition  
Sight-Reading

